

A 10 MINUTE BURN

This make-up was designed to assist you when simulating an accident where a fire or explosion has taken place and there are a number of bodies and little time to make them up. With a few simple materials you can create a miracle from a disastrous situation.

Materials & Equipment Needed:

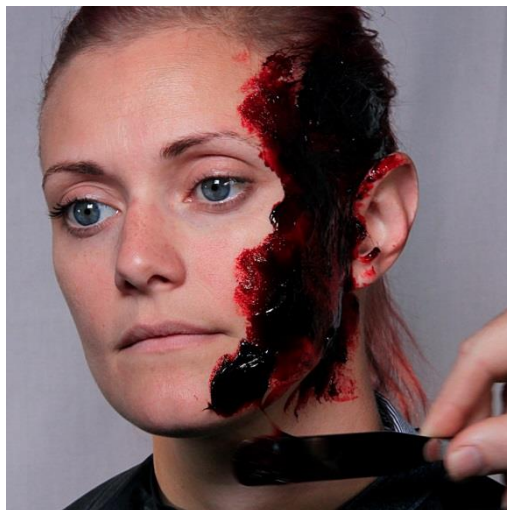
- Astringent
- Large Palette Knife
- Small Palette Knife
- Black Powder
- Powder Brush
- Facial Tissue
- Jam Blood
- Black Colored Hair Spray

Step 1 – Remove any make-up, excess oils or grease from the models skin with an Astringent.



Tip # 1: When doing any kind of a Burn Make-up protect the models wardrobe with a Make-up Cape or some kind of cover. Dark coloring Hair Spray and Black Powders have strong staining pigments.

Step 2 – With a Large Palette Knife spread Jam Blood over the affected area. Vary the thickness to create texture and different tones of color.



Step 3 – Use a sheet of Facial Tissue as a block to protect the model's eyes and nose area. Now use the Black Hair Spray and colour the Jam Blood with short blasts of color.



Step 4 – With a Brush, use the Black Powder and colour the edges of the Jam Blood. Avoid touching the Jam Blood at this point as the wet surface will gum up the Brush. Feather away the colour especially around the eyes. Then use a lot of Black Powder on the Brush and powder the center of the Jam Blood. The Black Powder will adhere without pulling the Jam Blood away.



Step 5 – Use the Small Palette Knife and pull away layers of the Jam Blood creating texture and contrast. The scrapped away areas should appear moist and raw versus the matt charred surface. Make all the exposed patches random shapes.



Step 6 – Lastly, go back with a Brush and the Black Powder and matt the Blackened areas that appear shiny.



TIP #2: Use water based lubricant such as Jordane Cosmetics® Jel-FX, K-Y ® Jelly or even Hand Sanitizer to maintain the wet look to raw areas.

